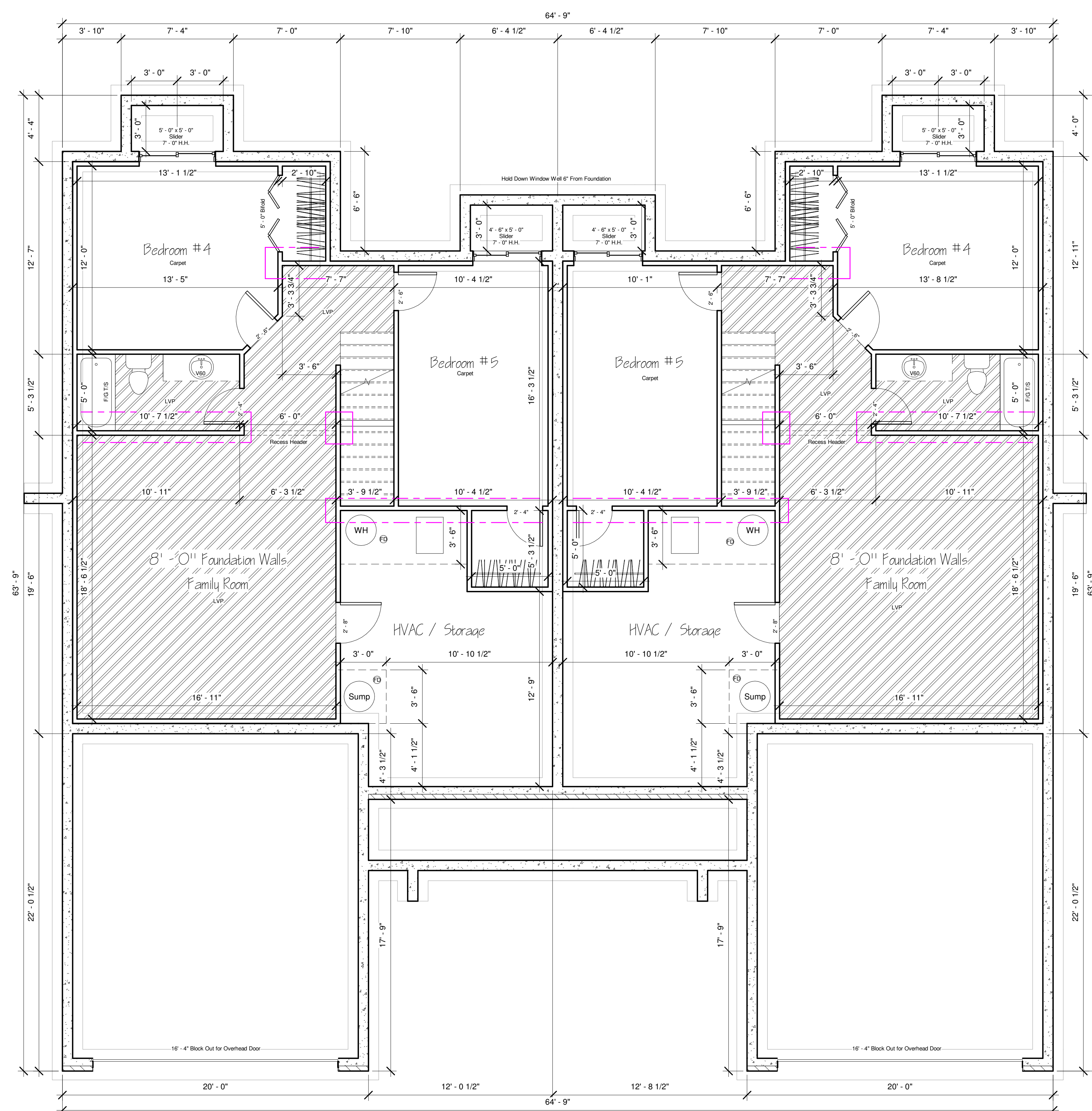




www.craigsharphomes.com

All plans are copyrighted and may not be reproduced either in whole or in part, in any form, without the written permission of Craig Sharp Homes

**FRAMING NOTE:**  
Permanent posts for decks to be set by Framer. Use Permacast columns when necessary.



House:	2378
Garage:	882
Front Porch:	124
Back Porch:	310
Finished Basement:	1788

Chuck Plan  
Fox Creek

**Foundation**

Date	12/15/23
Drawn by	BMS
Checked by	CAS

**A101**

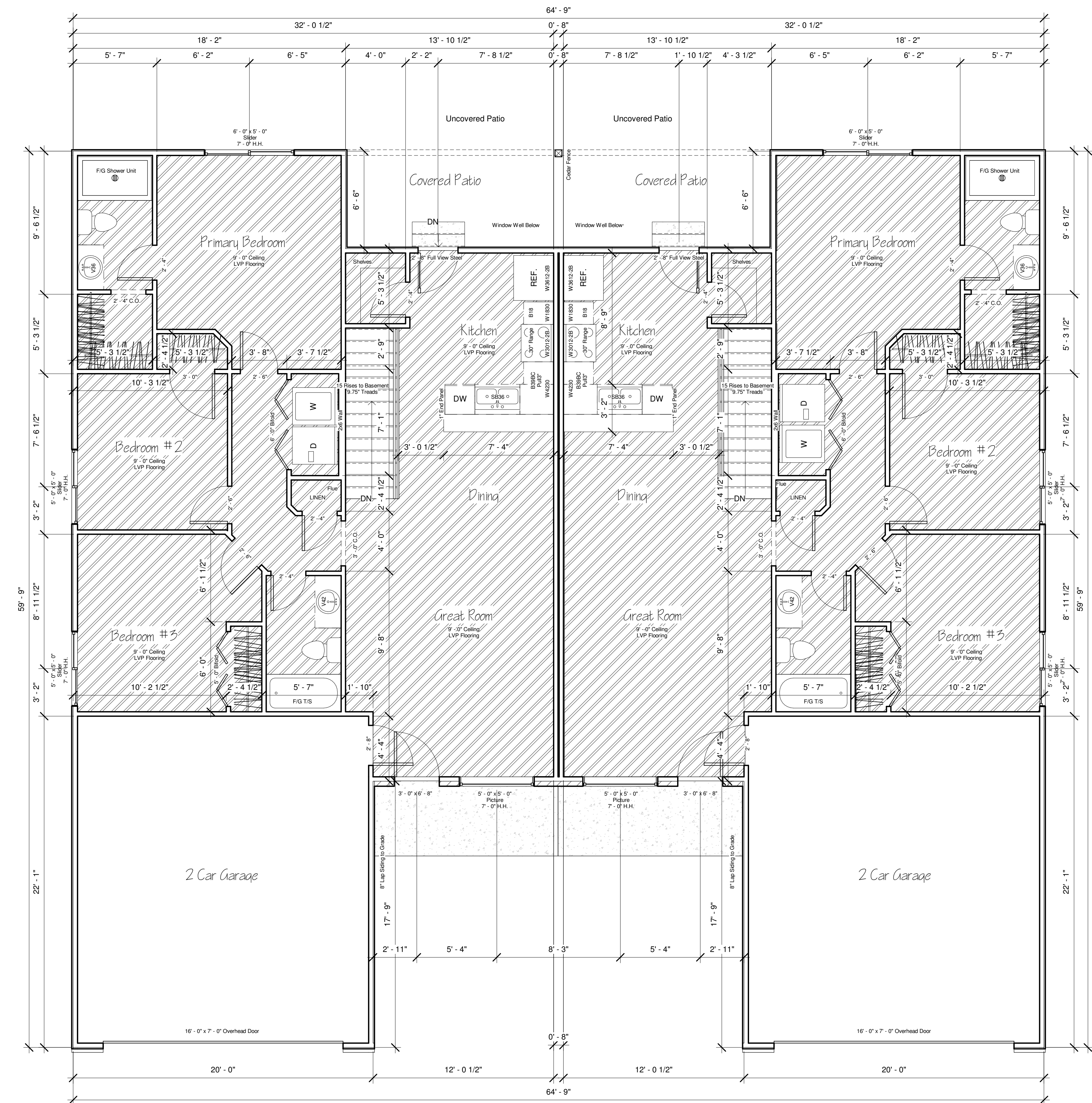
Scale	1/4" = 1'-0"
-------	--------------



www.craigsharphomes.com

All plans are copyrighted and may not be reproduced either in whole or in part, in any form, without the written permission of Craig Sharp Homes

**FRAMING NOTE:**  
Permanent posts for decks to be set by Framers. Use Permacast columns when necessary.



House:	2378
Garage:	882
Front Porch:	124
Back Porch:	310
Finished Basement:	1788

**Chuck Plan**  
**Fox Creek**

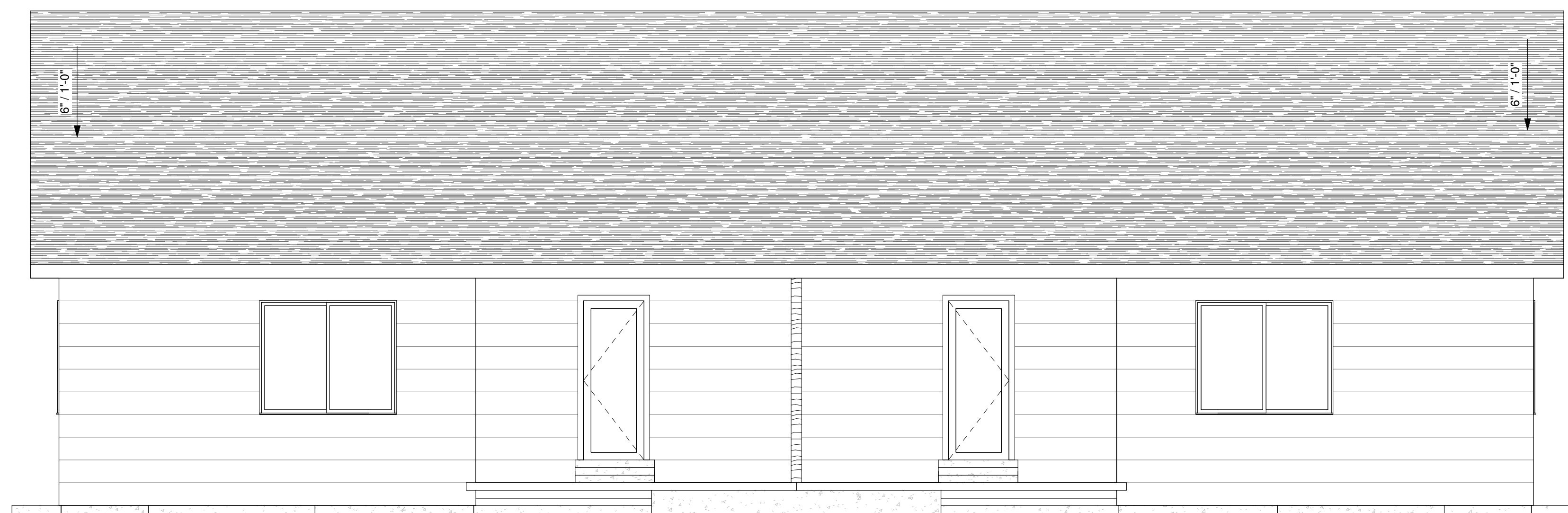
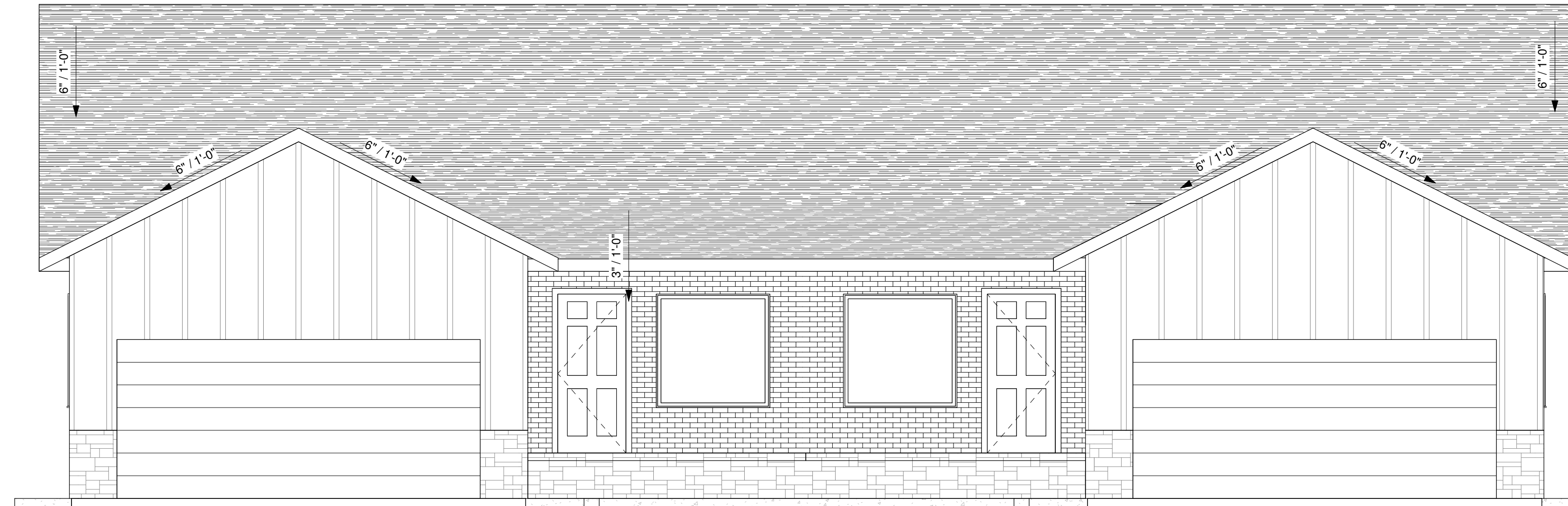
**Floor Plan**

Date	12/15/23
Drawn by	BMS
Checked by	CAS

**A102**

Scale	1/4" = 1'-0"
-------	--------------

Cottonwood Tumbled Stone  
 Hickory Brick  
 White Mortar on Both Masonry  
 Body Paint - Alabaster SW 7008  
 Exterior Door Paint - Urbane Bronze SW 7048  
 Fascia Paint - Felted Wool SW 9171



www.craigsharphomes.com

All plans are copyrighted and may not be reproduced either in whole or in part, in any form, without the written permission of Craig Sharp Homes

**FRAMING NOTE:**  
 Permanent posts for decks to be set by Framer. Use Permacast columns when necessary.

House:	2378
Garage:	882
Front Porch:	124
Back Porch:	310
Finished Basement:	1788

Chuck Plan  
 Fox Creek

Front / Back Elevation

Date	12/15/23
Drawn by	BMS
Checked by	CAS

**A103**

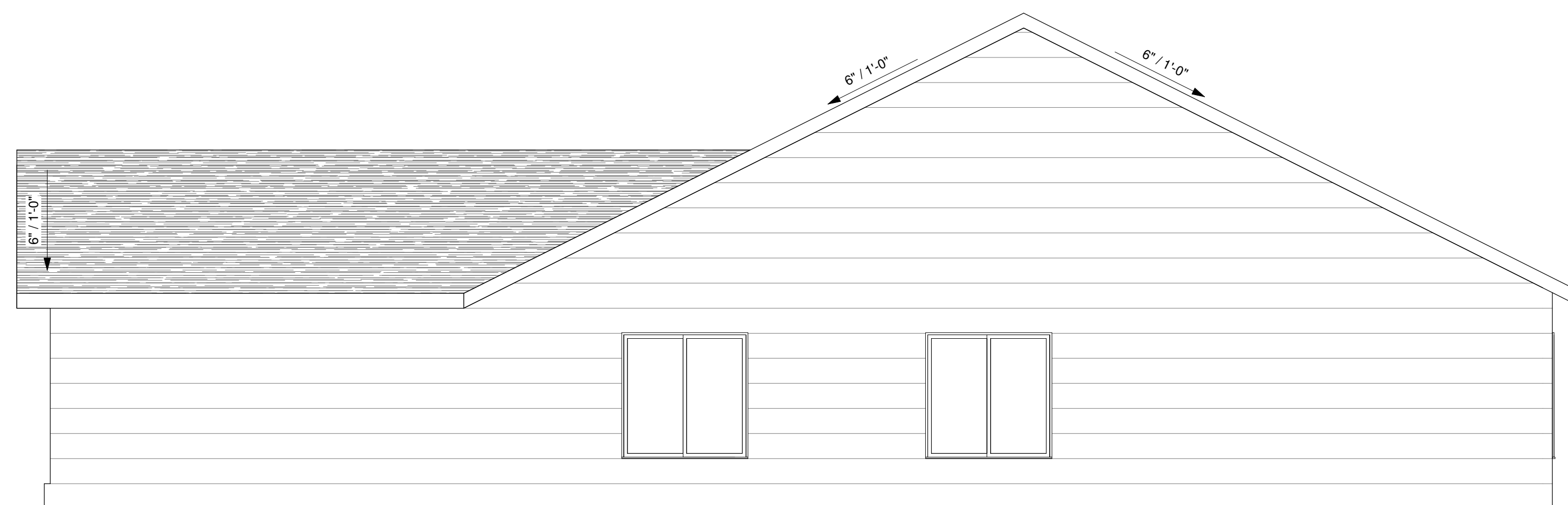
Scale	1/4" = 1'-0"
-------	--------------



www.craigsharphomes.com

All plans are copyrighted and may not be reproduced either in whole or in part, in any form, without the written permission of Craig Sharp Homes

**FRAMING NOTE:**  
Permanent posts for decks to be set by Framer. Use Permacast columns when necessary.



① Left  
1/4" = 1'-0"



② Right  
1/4" = 1'-0"

House:	2378
Garage:	882
Front Porch:	124
Back Porch:	310
Finished Basement:	1788

Chuck Plan  
Fox Creek

Left / Right Elevations

Date	12/15/23
Drawn by	BMS
Checked by	CAS

**A104**

Scale	1/4" = 1'-0"
-------	--------------