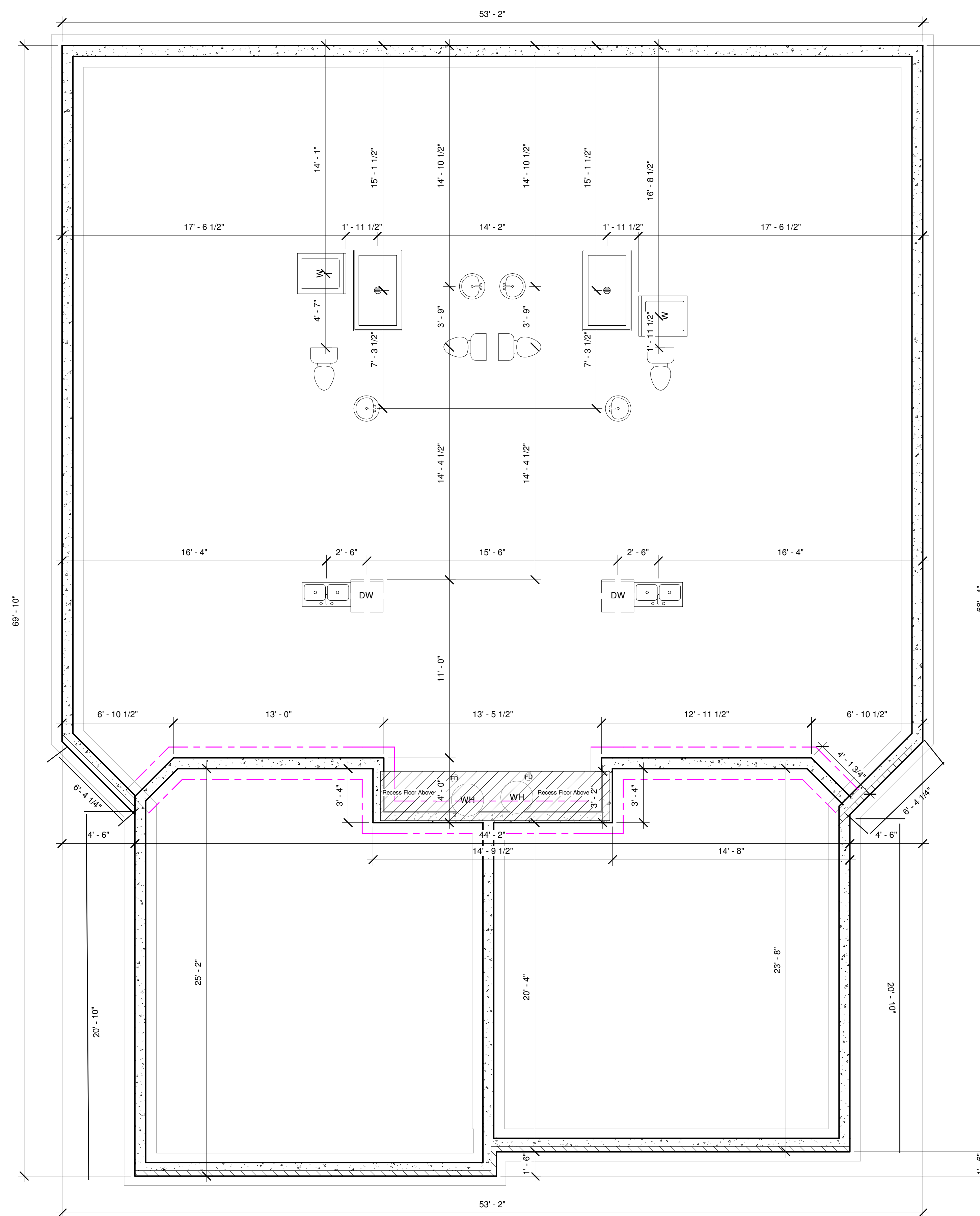




www.craigsharphomes.com

All plans are copyrighted and may not be reproduced either in whole or in part, in any form, without the written permission of Craig Sharp Homes

**FRAMING NOTE:**  
Permanent posts for decks to be set by Framer. Use Permacast columns when necessary.



House:	2364
Garage:	991
Front Porch:	404
Back Porch:	225
Finished Basement:	-

Holly Plan  
Fox Creek

Foundation

Date	12/5/23
Drawn by	BMS
Checked by	CAS

**A101**

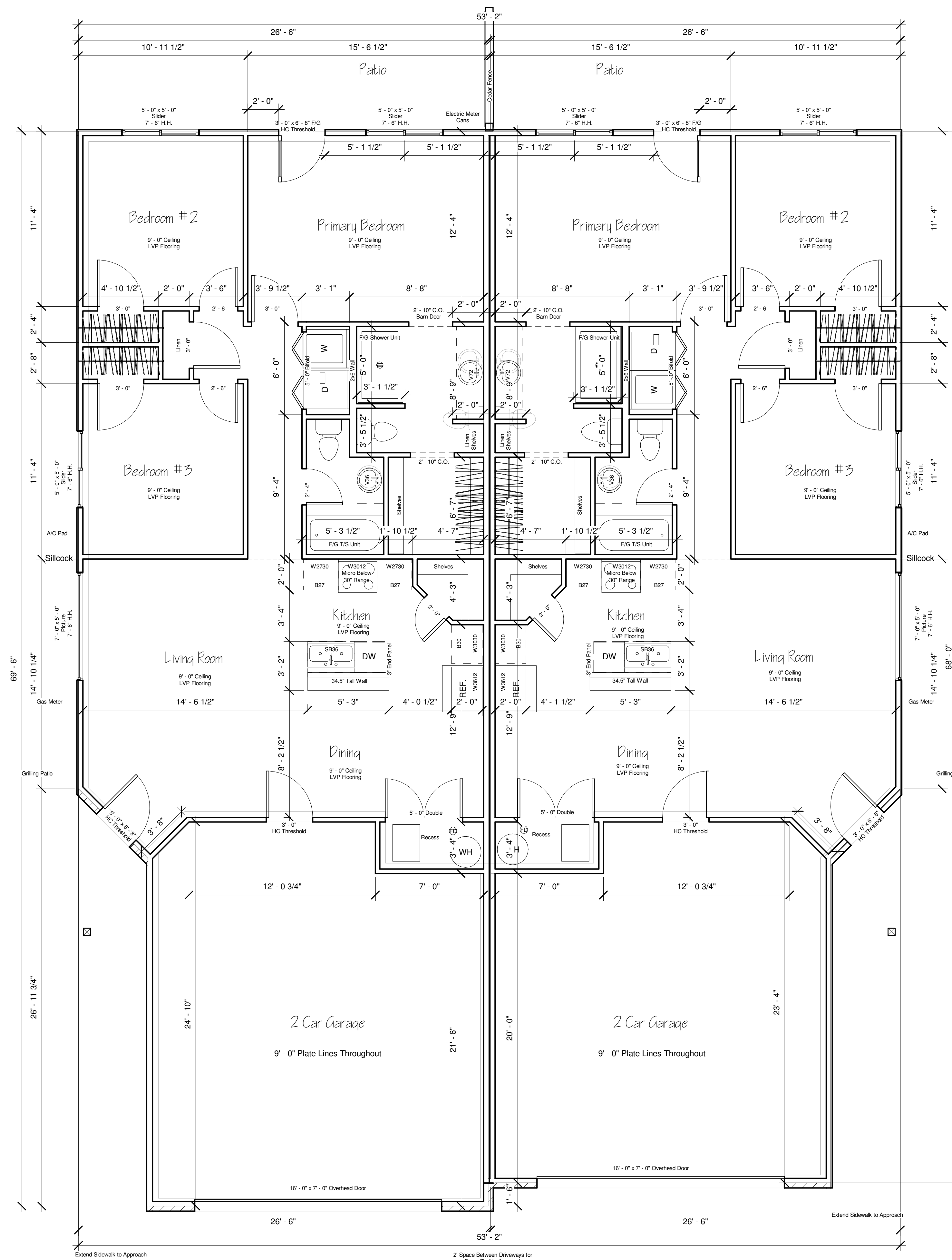
Scale	1/4" = 1'-0"
-------	--------------



www.craigsharphomes.com

All plans are copyrighted and may not be reproduced either in whole or in part, in any form, without the written permission of Craig Sharp Homes

**FRAMING NOTE:**  
Permanent posts for decks to be set by Framer. Use Permacast columns when necessary.



House:	2364
Garage:	991
Front Porch:	404
Back Porch:	225
Finished Basement:	-

Holly Plan  
Fox Creek

Floor Plan

Date	12/5/23
Drawn by	BMS
Checked by	CAS

A102

Scale	1/4" = 1'-0"
-------	--------------

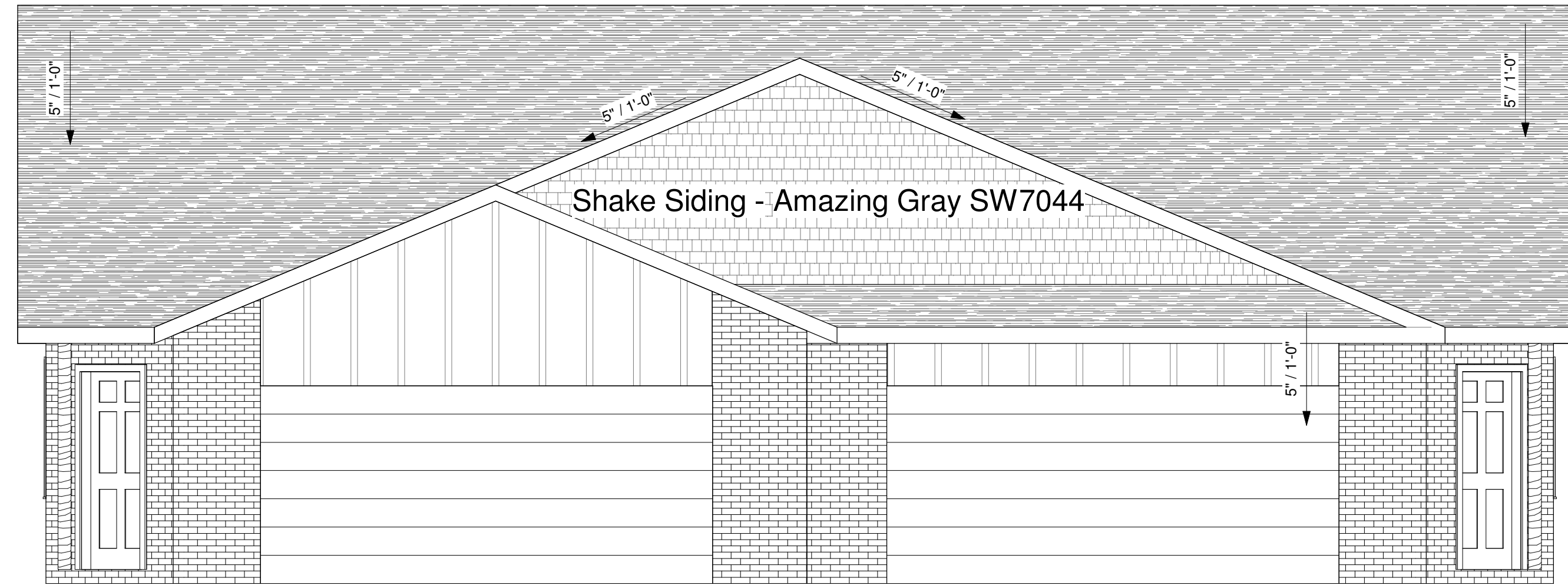
Burlington Antique Brick  
 White Mortar  
 Trim - Pure White SW7005  
 Body - Worldly Gray SW7043 (Except where noted otherwise)  
 Exterior Doors & Garage Doors - Tricorn Black SW6258



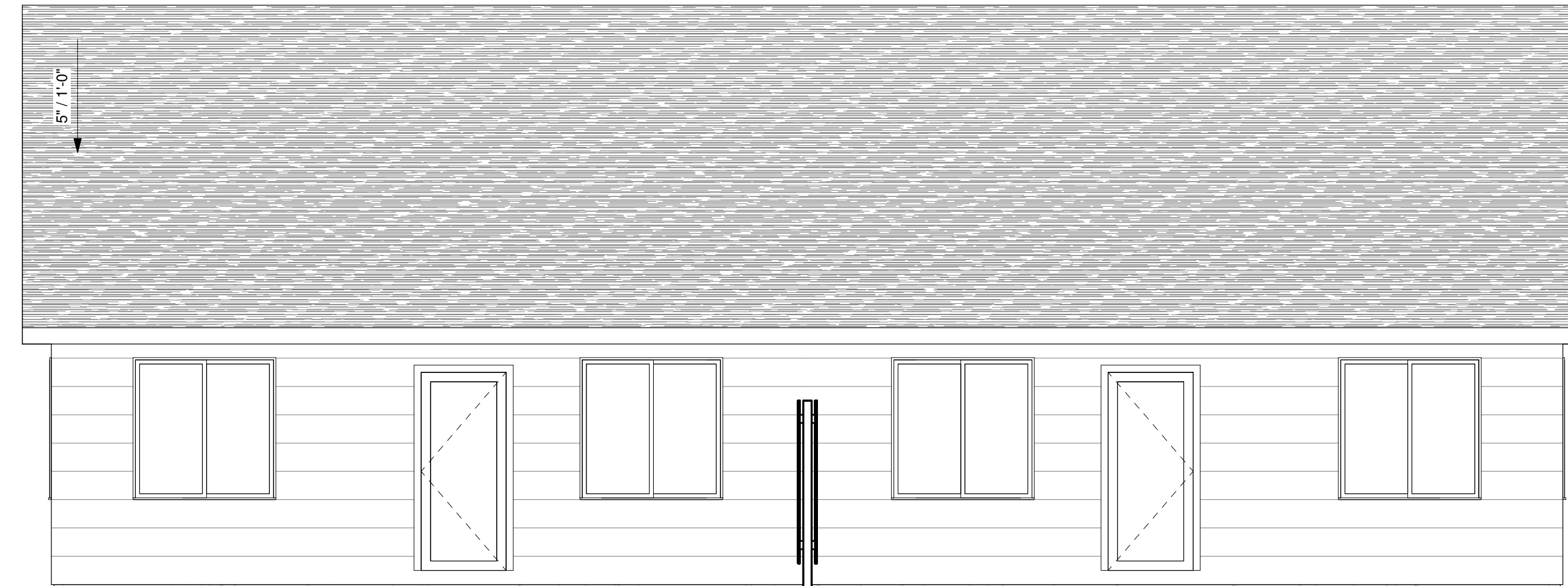
www.craigsharphomes.com

All plans are copyrighted and may not be reproduced either in whole or in part, in any form, without the written permission of Craig Sharp Homes

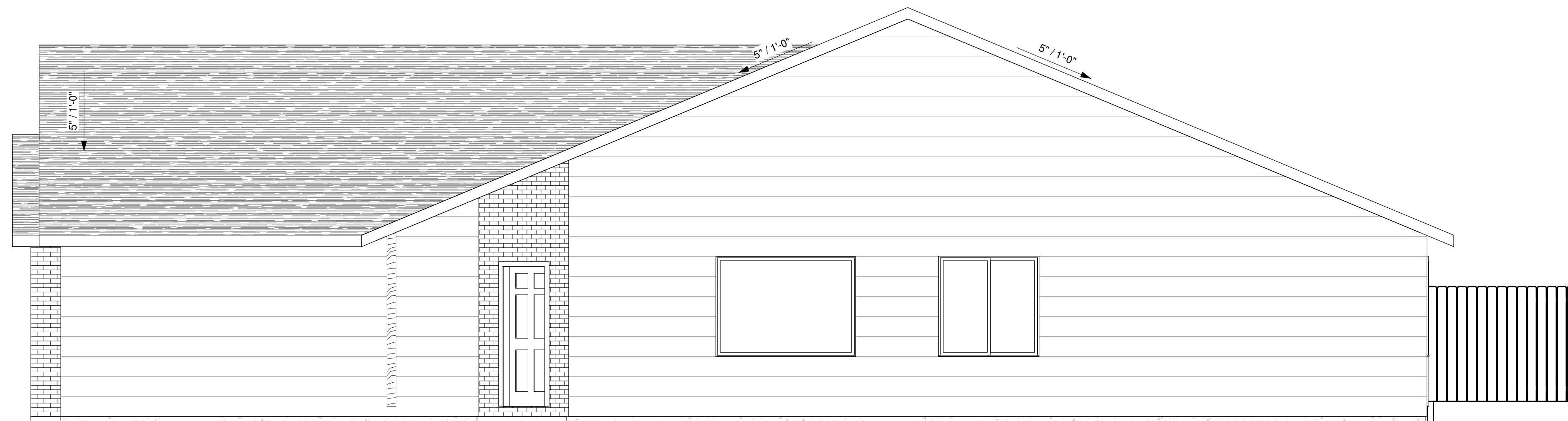
FRAMING NOTE:  
 Permanent posts for decks to be set by Framer. Use Permacast columns when necessary.



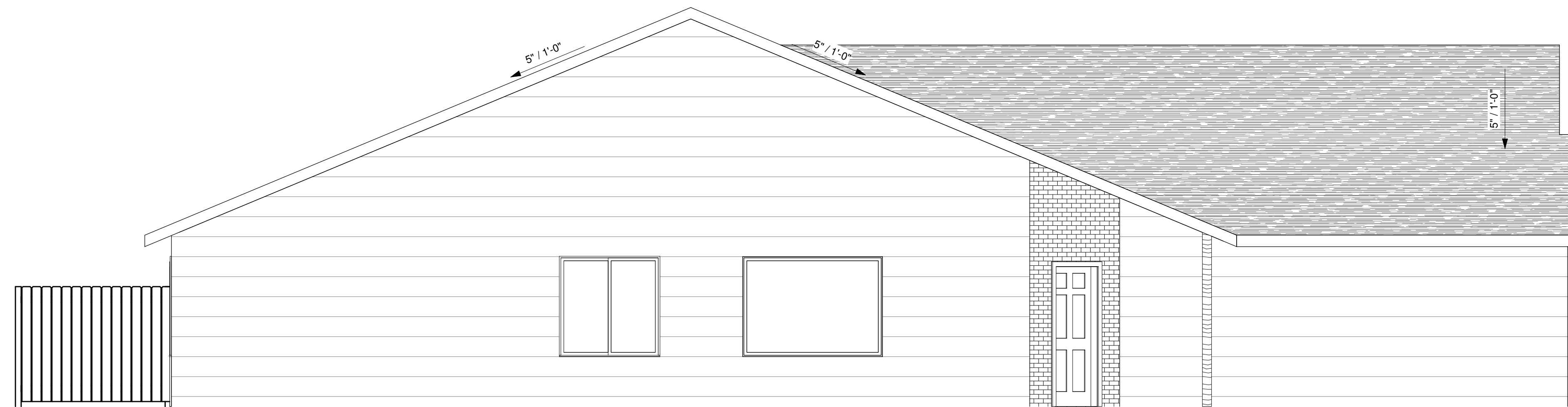
① Front  
 1/4" = 1'-0"



② Back  
 1/4" = 1'-0"



③ Left  
 1/4" = 1'-0"



④ Right  
 1/4" = 1'-0"

House:	2364
Garage:	991
Front Porch:	404
Back Porch:	225
Finished Basement:	-

Holly Plan  
 Fox Creek

Elevations

Date	12/5/23
Drawn by	BMS
Checked by	CAS

A103

Scale	1/4" = 1'-0"
-------	--------------