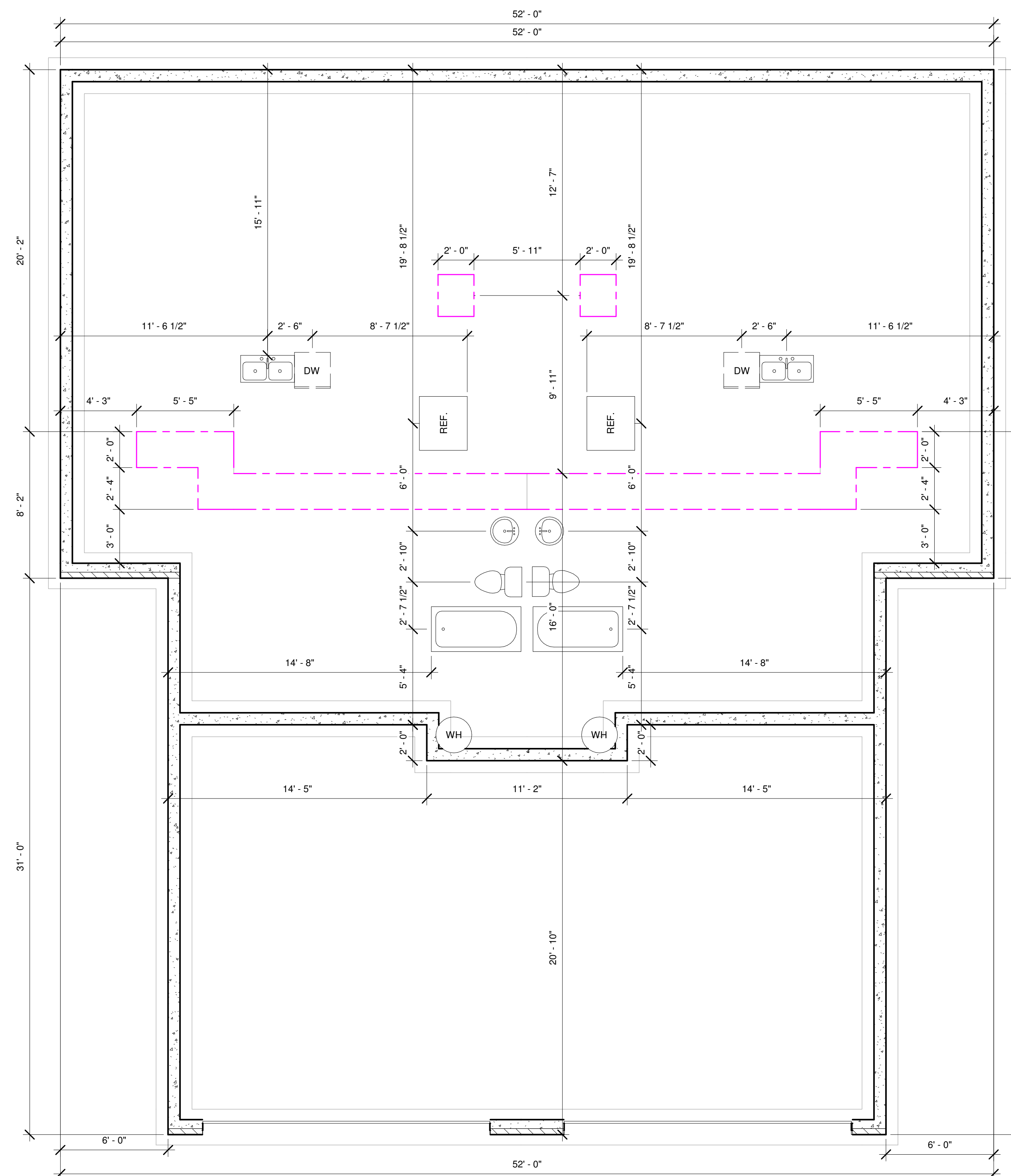




www.craigsharphomes.com

All plans are copyrighted and may not be reproduced either in whole or in part, in any form, without the written permission of Craig Sharp Homes

**FRAMING NOTE:**  
Permanent posts for decks to be set by Framer. Use Permacast columns when necessary.



House:	1816
Garage:	874
Front Porch:	60
Back Porch:	-
2nd Floor:	1806

Maggie Plan  
Fox Creek

Foundation

Date	12/28/23
Drawn by	BMS
Checked by	CAS

A101

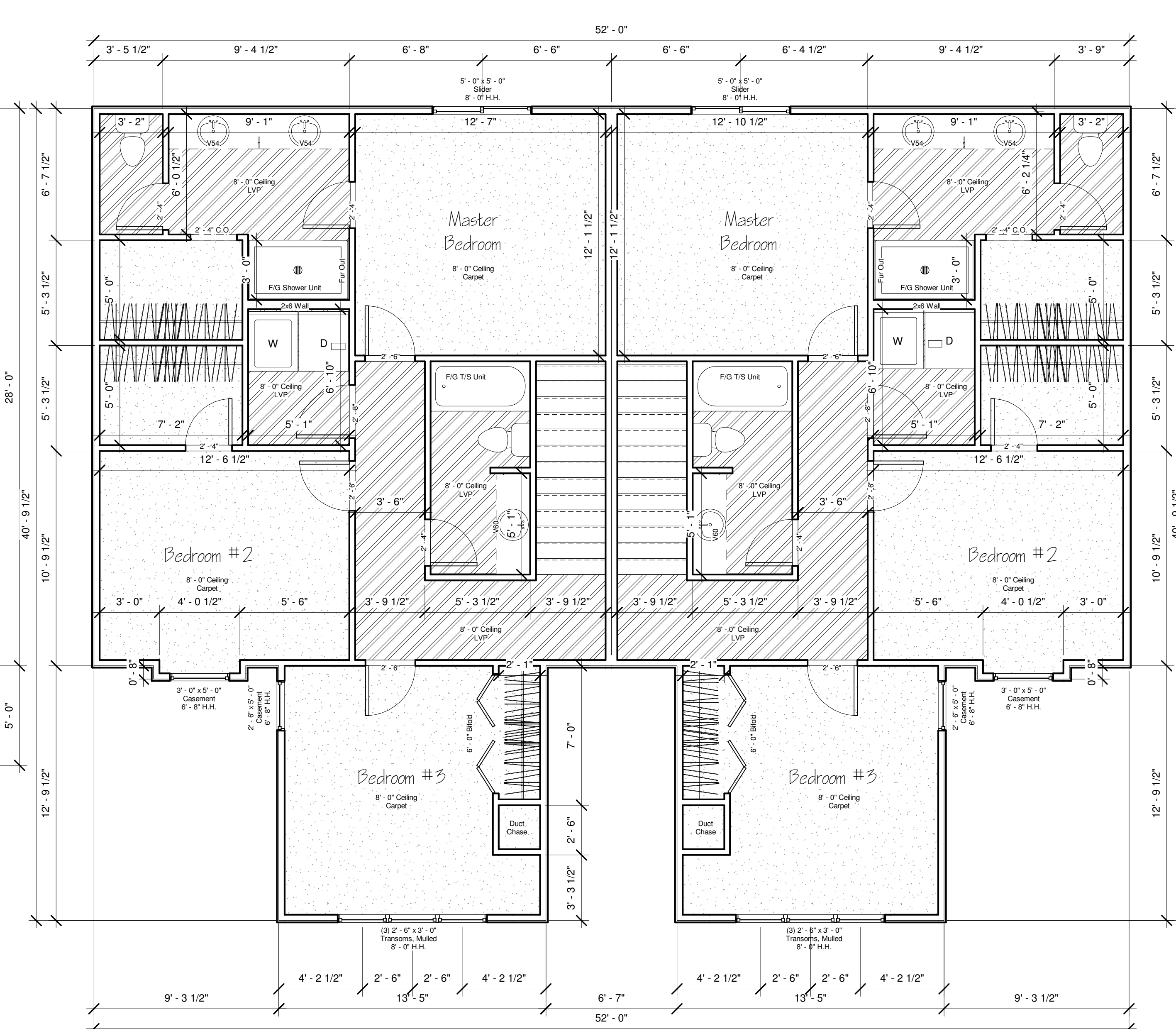
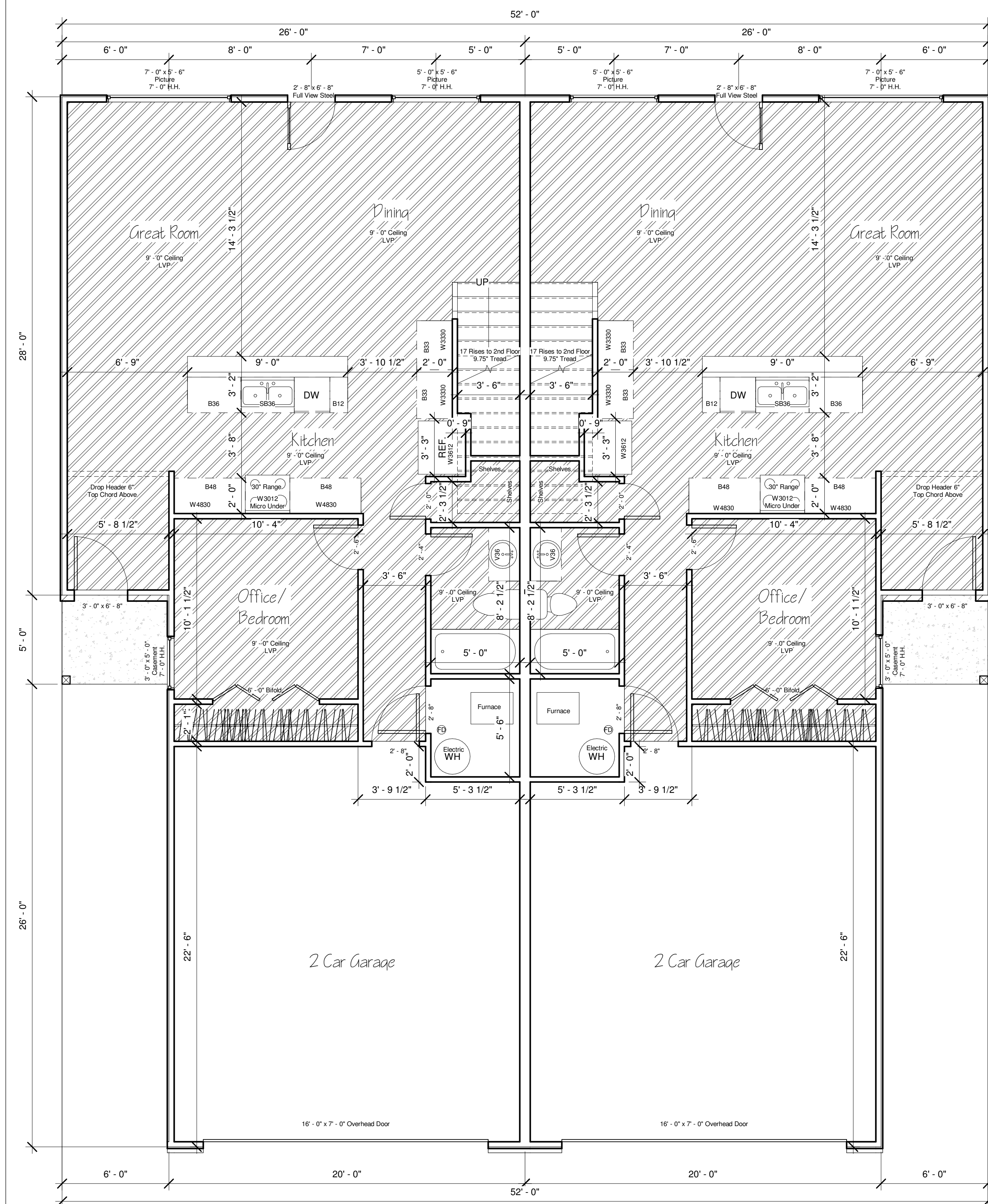
Scale	1/4" = 1'-0"
-------	--------------



www.craigsharpshomes.com

All plans are copyrighted and may not be reproduced either in whole or in part, in any form, without the written permission of Craig Sharp Homes

**FRAMING NOTE:**  
Permanent posts for decks to be set by Framer. Use Permacast columns when necessary.



House:	1816
Garage:	874
Front Porch:	60
Back Porch:	-
2nd Floor:	1806

Maggie Plan  
Fox Creek

Floor Plan

Date	12/28/23
Drawn by	BMS
Checked by	CAS

A102

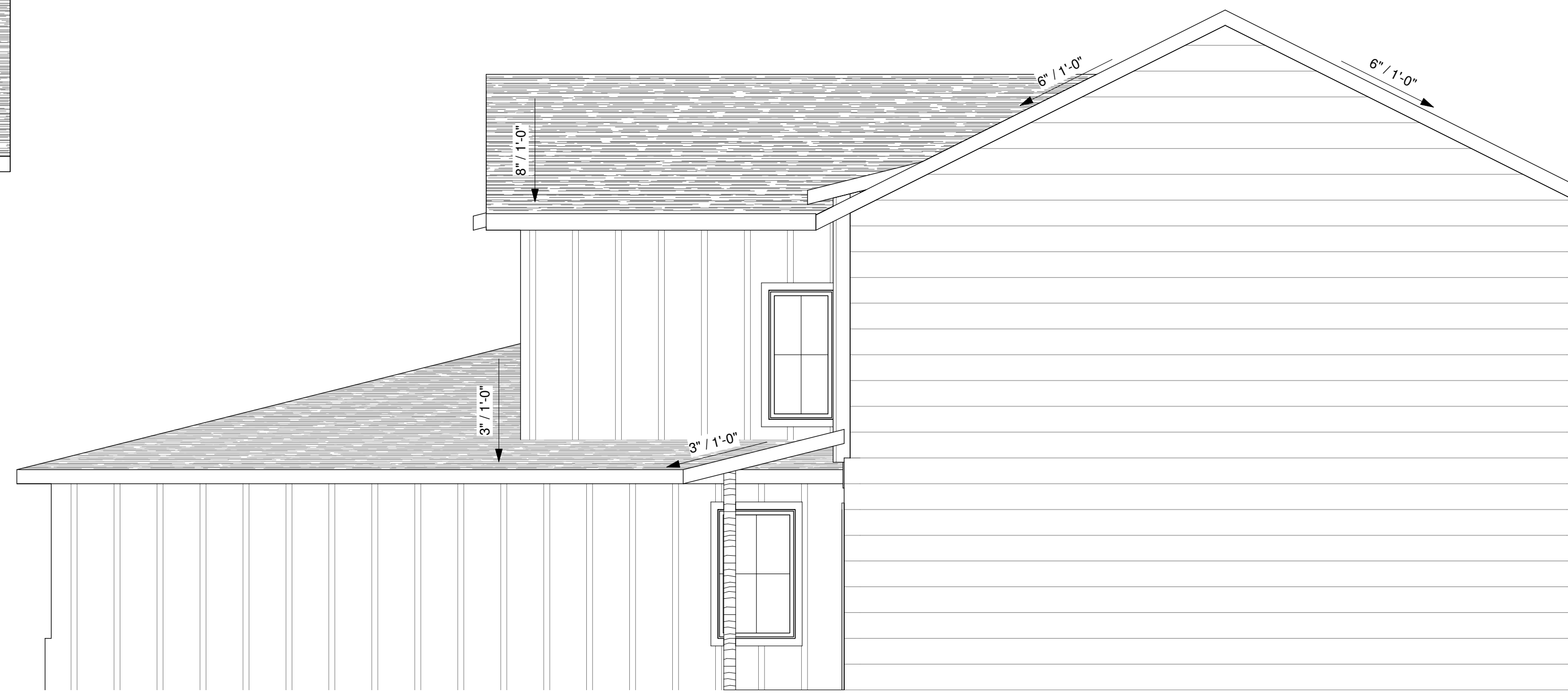
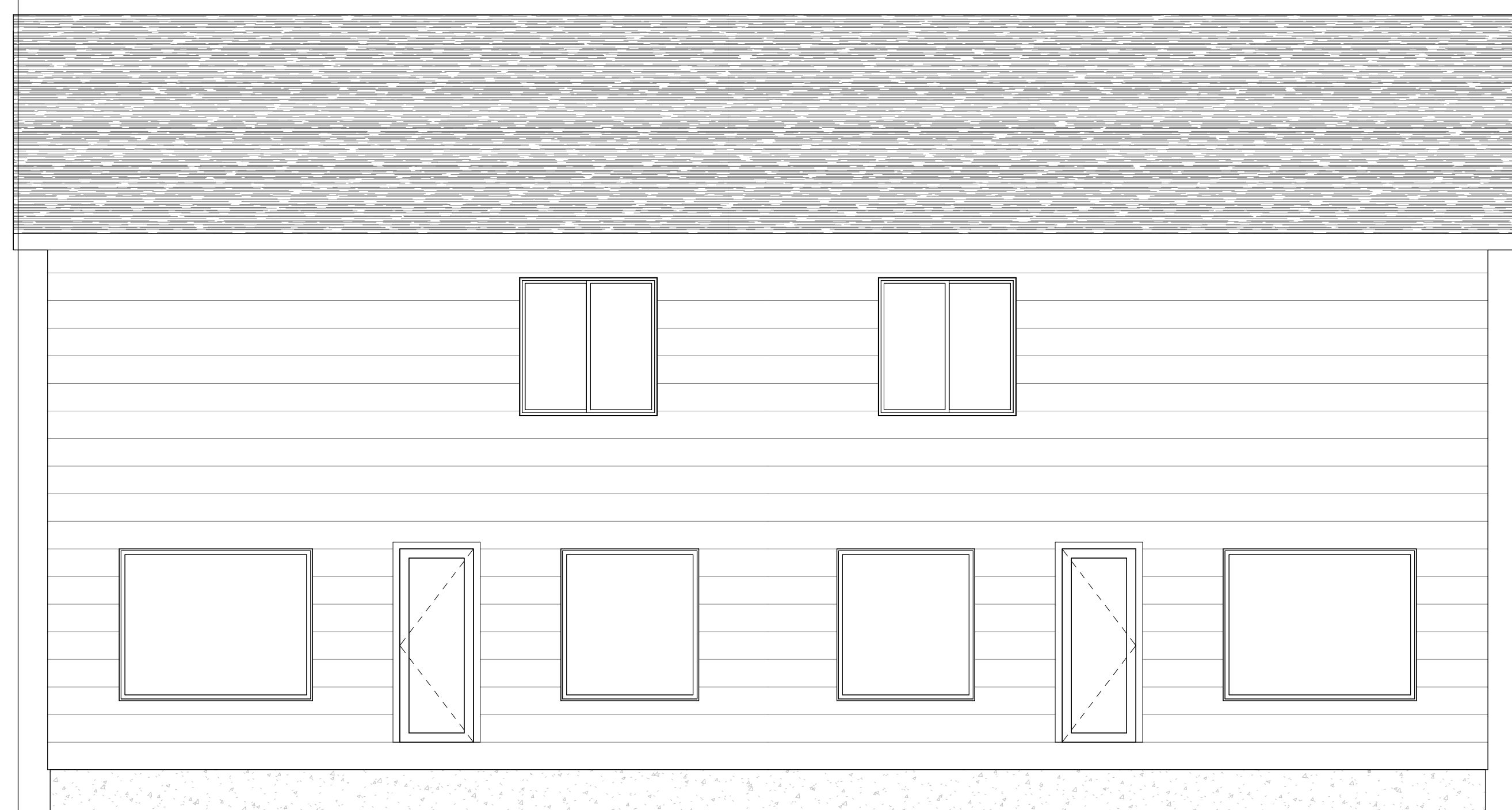
Scale	1/4" = 1'-0"
-------	--------------



www.craigsharphomes.com

All plans are copyrighted and may not be reproduced either in whole or in part, in any form, without the written permission of Craig Sharp Homes

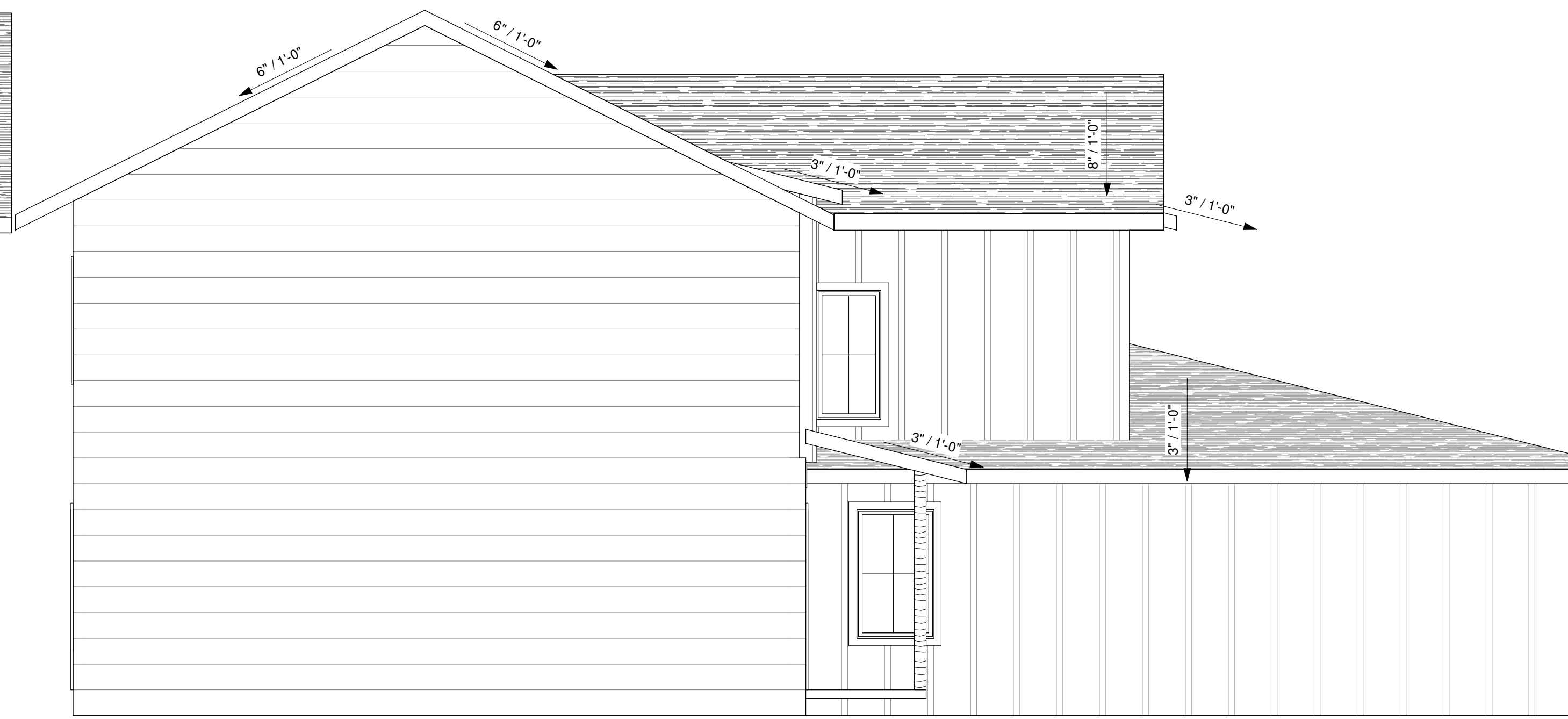
**FRAMING NOTE:**  
Permanent posts for decks to be set by Framer. Use Permacast columns when necessary.



② Back  
1/4" = 1'-0"

③ Left  
1/4" = 1'-0"

Painter Brick  
Gray Mortar  
Body & Trim Paint - Pure White SW7005  
Exterior Doors - Iron Ore SW7069



① Front  
1/4" = 1'-0"

④ Right  
1/4" = 1'-0"

House:	1816
Garage:	874
Front Porch:	60
Back Porch:	-
2nd Floor:	1806

Maggie Plan  
Fox Creek

Elevations

Date	12/28/23
Drawn by	BMS
Checked by	CAS

A104

Scale	1/4" = 1'-0"
-------	--------------