

www.craigsharphomes.com

All plans are copyrighted and may not be reproduced either in whole or in part, in any form, without the written permission of Craig Sharp Homes

**FRAMING NOTE:**  
Permanent posts for decks to be set by Framer. Use Permacast columns when necessary.

|                    |      |
|--------------------|------|
| House:             | 2752 |
| Garage:            | 980  |
| Front Porch:       | 16   |
| Back Porch:        | 160  |
| Finished Basement: | -    |

**Maxwell Plan  
Fox Creek**

**Foundation**

|            |          |
|------------|----------|
| Date       | 12/15/23 |
| Drawn by   | BMS      |
| Checked by | CAS      |

**A101**

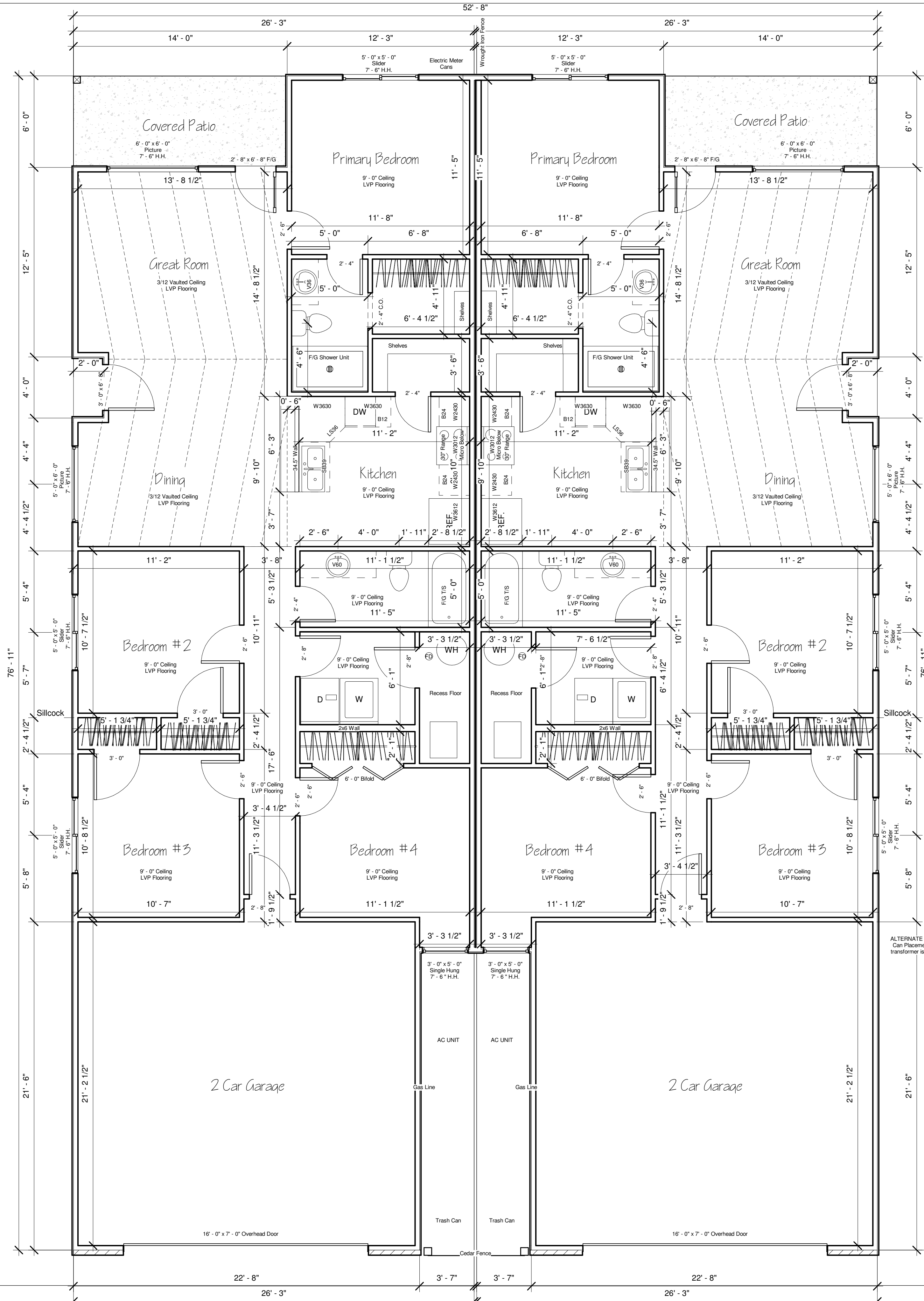
Scale 1/4" = 1'-0"



www.craigsharp.com

All plans are copyrighted and may not be reproduced either in whole or in part, in any form, without the written permission of Craig Sharp Homes

**FRAMING NOTE:**  
Permanent posts for decks to be set by Framer. Use Permacast columns when necessary.



|                    |      |
|--------------------|------|
| House:             | 1376 |
| Garage:            | 490  |
| Front Porch:       | 8    |
| Back Porch:        | 82   |
| Finished Basement: | -    |

Maxwell Plan  
Fox Creek

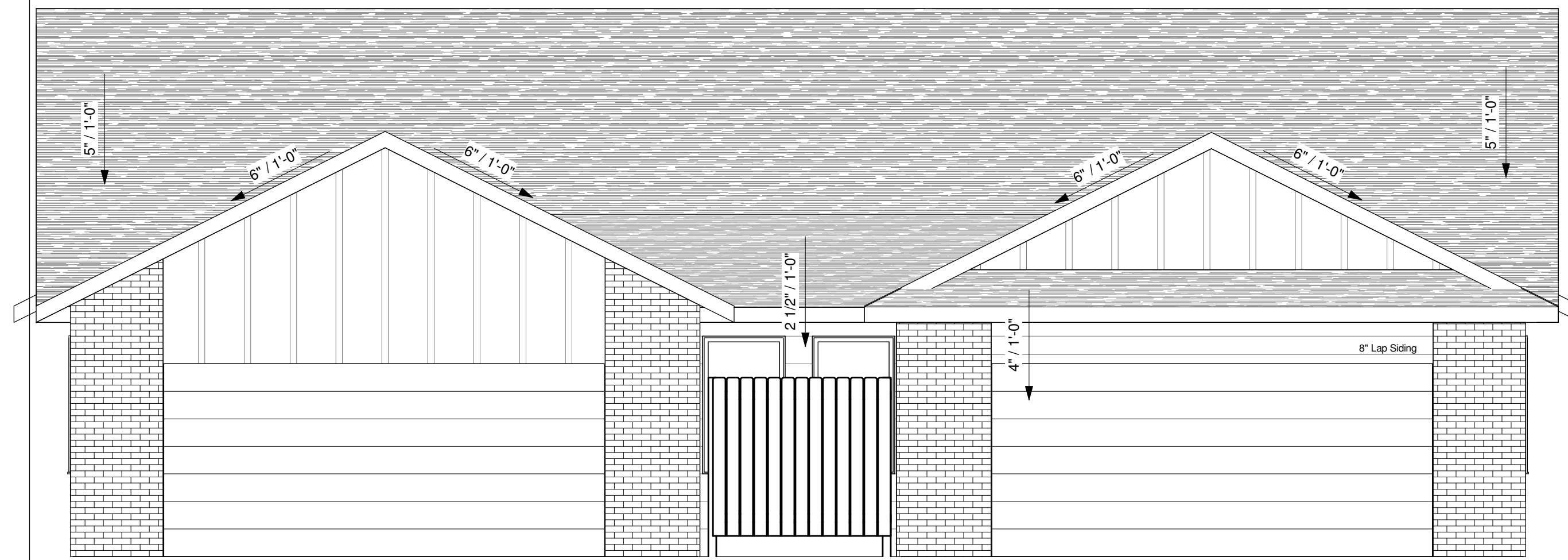
Floor Plan

|            |          |
|------------|----------|
| Date       | 12/15/23 |
| Drawn by   | BMS      |
| Checked by | CAS      |

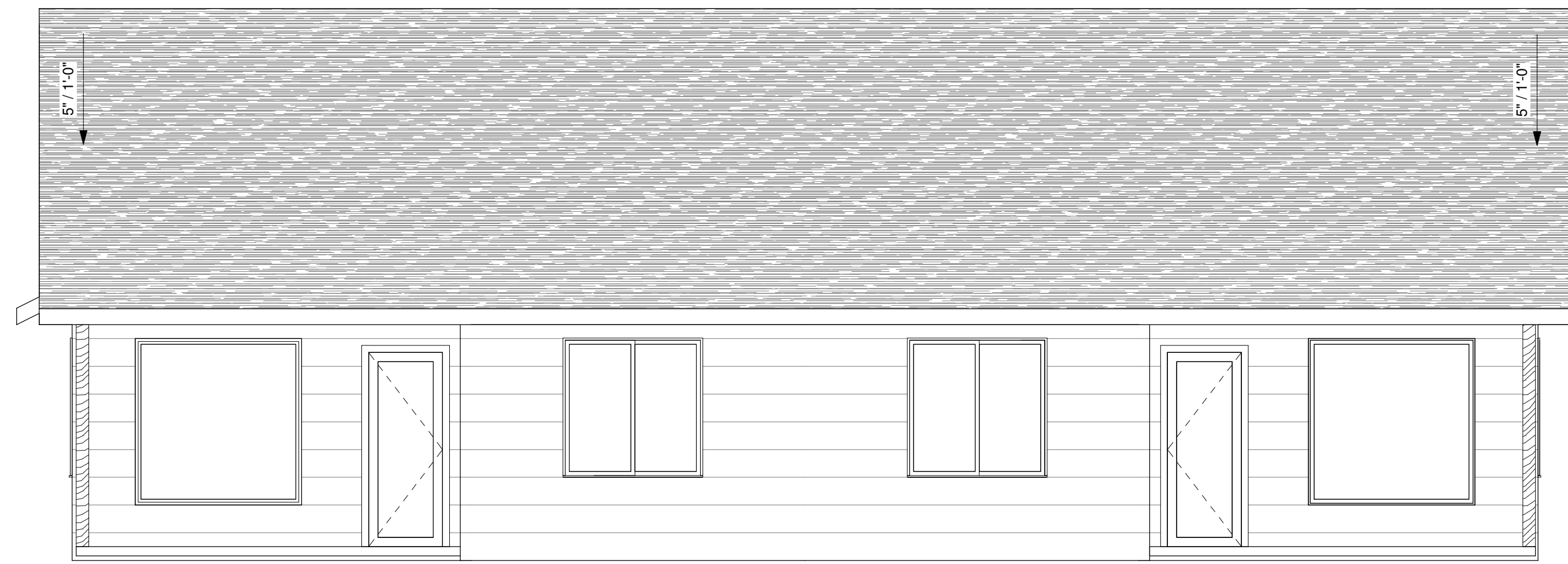
A102

|       |              |
|-------|--------------|
| Scale | 1/4" = 1'-0" |
|-------|--------------|

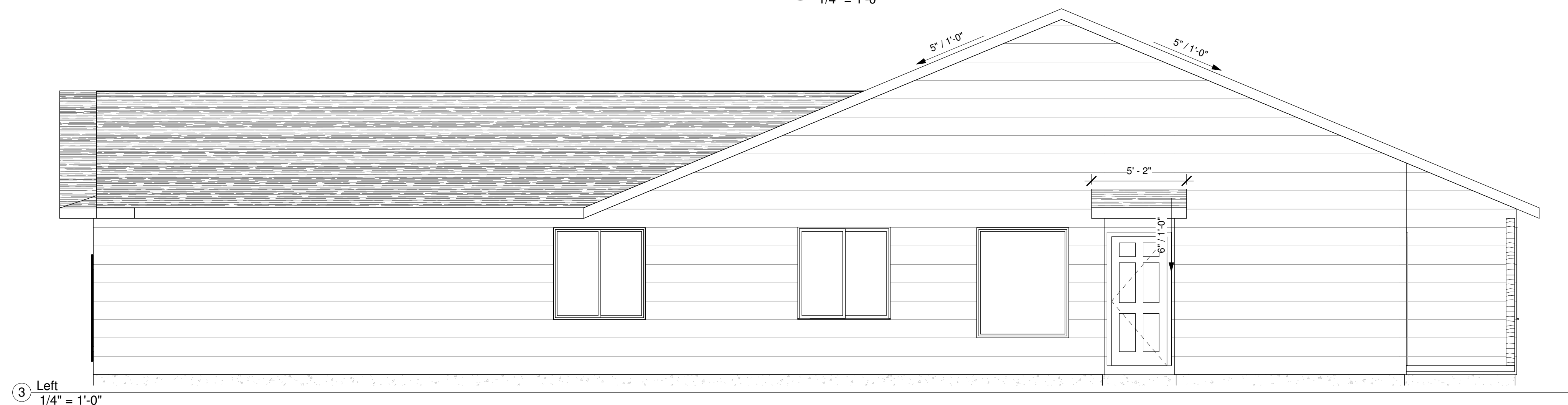
Burlington Antique Brick  
 Gray Mortar  
 Body - Dorian Gray SW 7017  
 Trim & Garage Doors - Pure White SW 7005  
 Walk Doors, Siding Over Garage - Gauntlet Gray SW7019



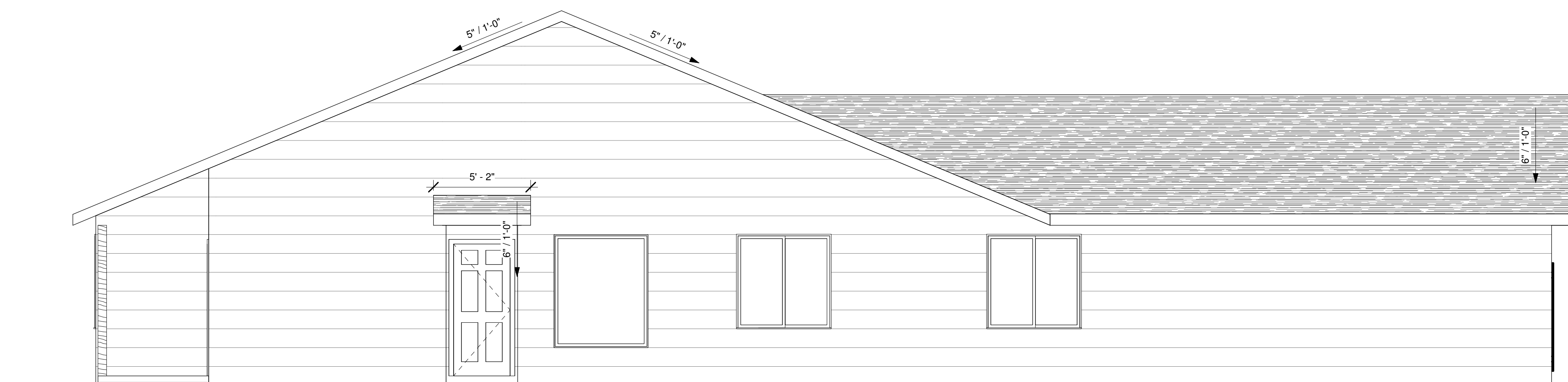
1 Front  
 1/4" = 1'-0"



2 Back  
 1/4" = 1'-0"



3 Left  
 1/4" = 1'-0"



4 Right  
 1/4" = 1'-0"



www.craigsharphomes.com

All plans are copyrighted and may not be reproduced either in whole or in part, in any form, without the written permission of Craig Sharp Homes

FRAMING NOTE:  
 Permanent posts for decks to be set by Framer. Use Permacast columns when necessary.

|                    |      |
|--------------------|------|
| House:             | 1376 |
| Garage:            | 490  |
| Front Porch:       | 8    |
| Back Porch:        | 82   |
| Finished Basement: | -    |

Maxwell Plan  
 Fox Creek

Elevations

|            |          |
|------------|----------|
| Date       | 12/15/23 |
| Drawn by   | BMS      |
| Checked by | CAS      |

A103

|       |              |
|-------|--------------|
| Scale | 1/4" = 1'-0" |
|-------|--------------|